The image features a central shield-shaped graphic with a light teal border and a white interior. Inside the shield, the text "Ready for the world" is written in a dark teal, serif font, arranged in three lines. The background is split: the left side has abstract, overlapping teal and light blue curved shapes, while the right side is a solid dark teal.

**Ready
for the
world**



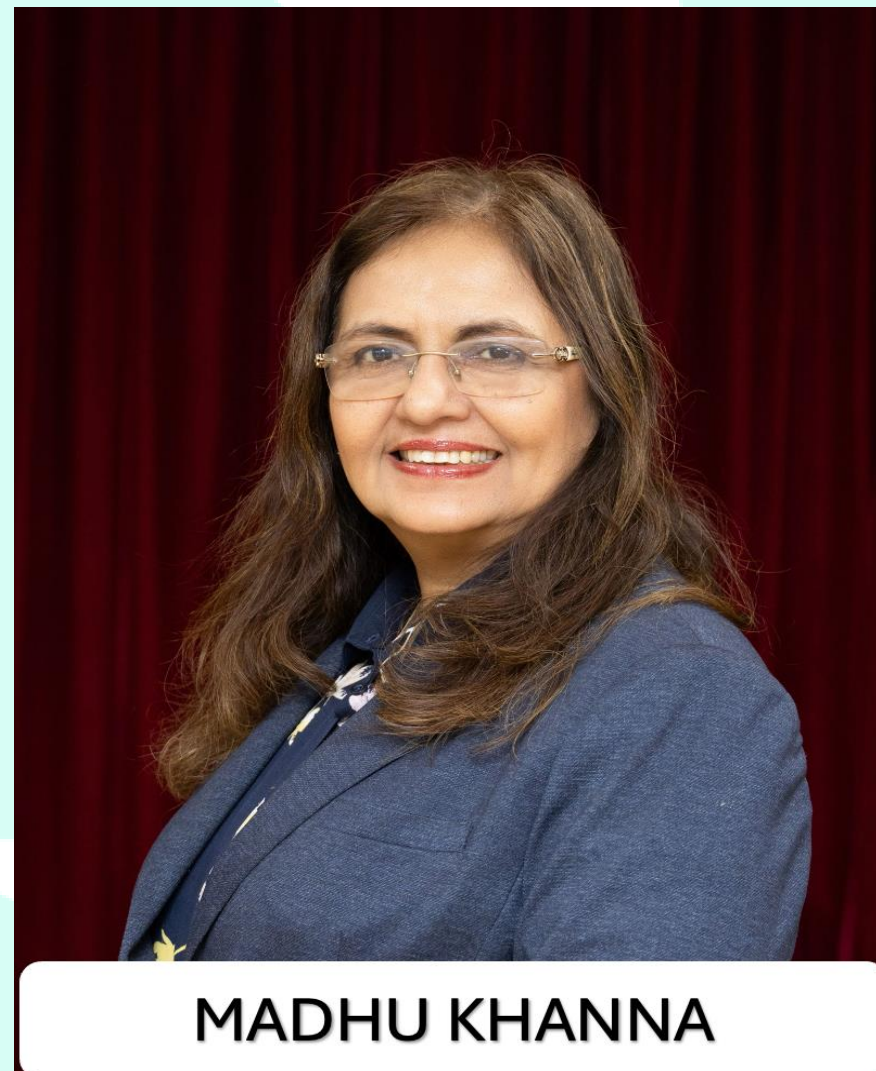
CAMBRIDGE



Global
Schools
Group

An initiative of GSF

**Unlock
My Profile
Scan the
QR Code**



MADHU KHANNA

Senior Principal



CAMBRIDGE

Leadership in the 21st Century:

Becoming Infinite Learners in Education

Madhu Khanna

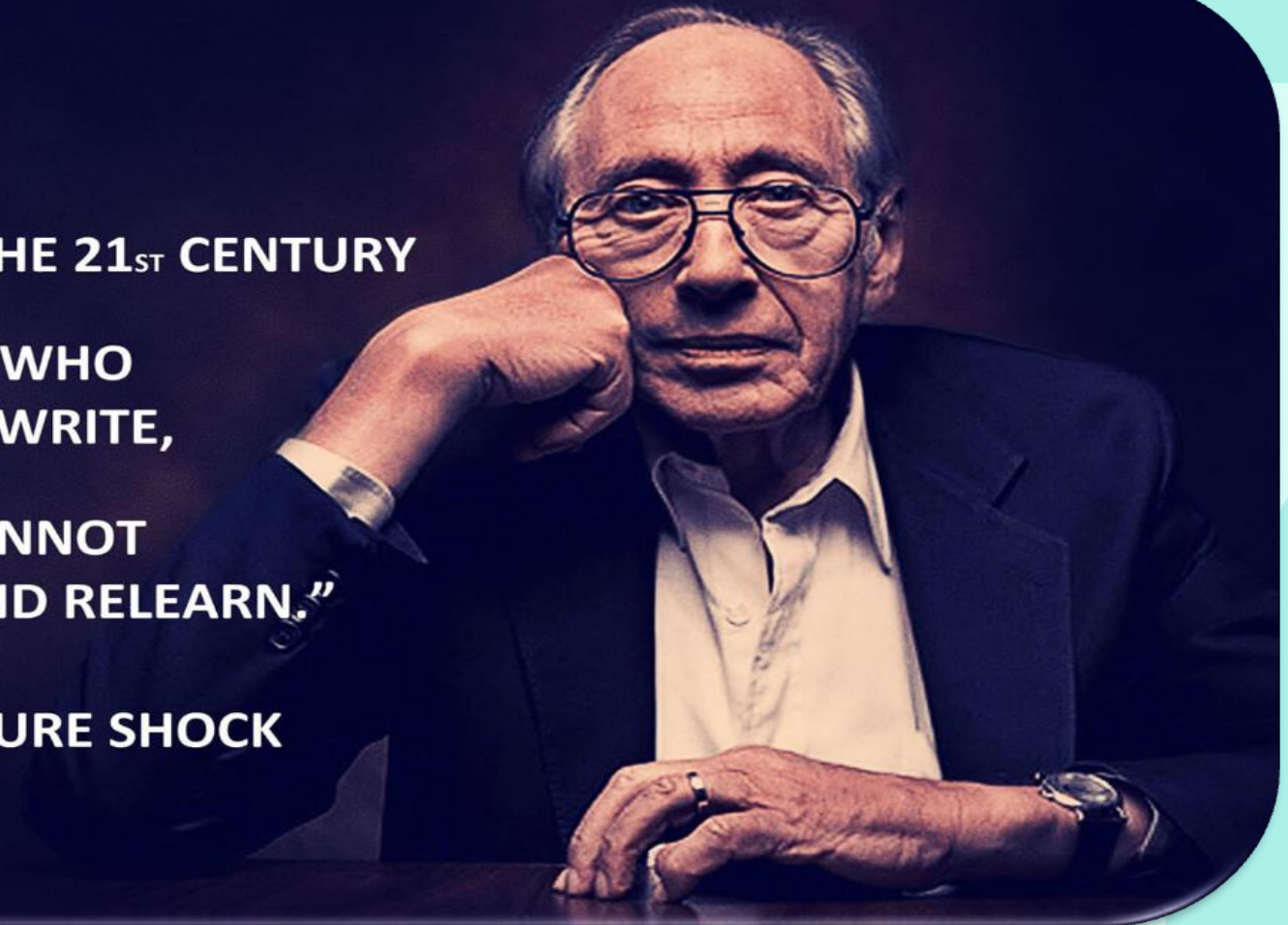
12th & 13th April, 2025

“THE ILLITERATE OF THE 21ST CENTURY

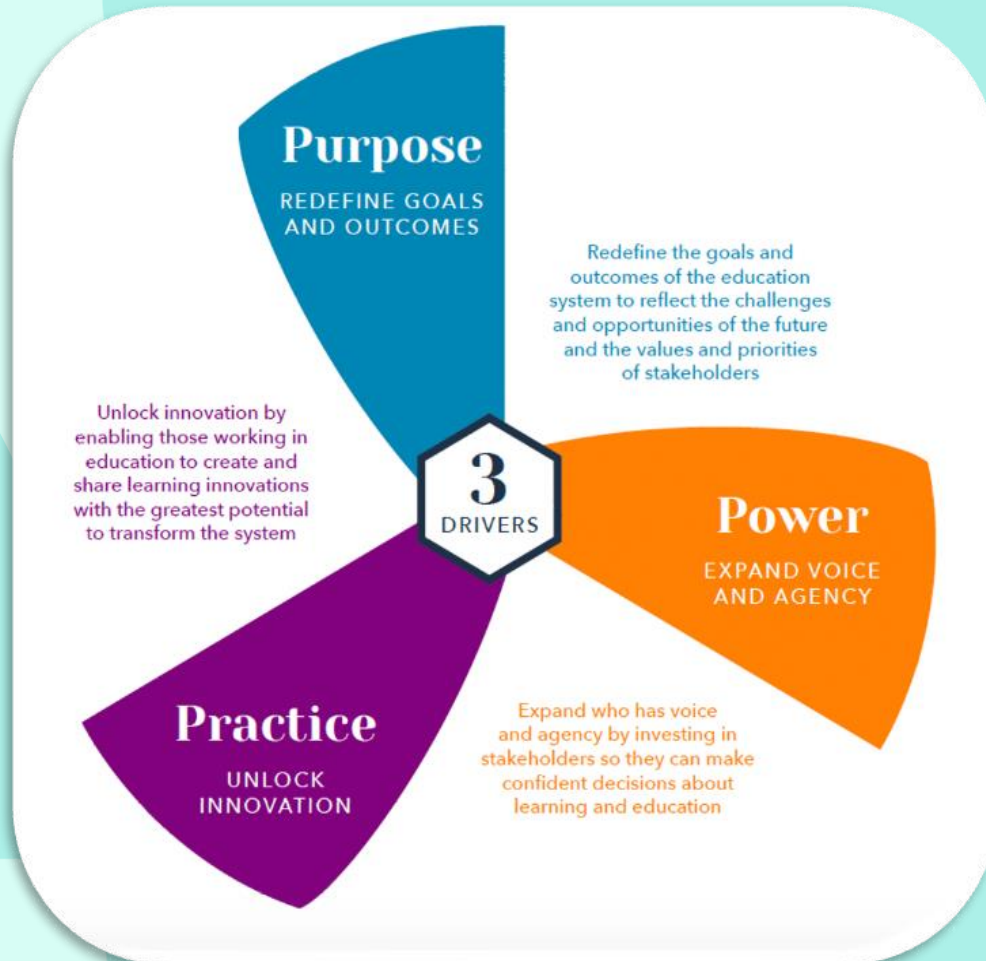
**WILL NOT BE THOSE WHO
CANNOT READ AND WRITE,**

**BUT THOSE WHO CANNOT
LEARN, UNLEARN AND RELEARN.”**

~ALVIN TOFFLER, FUTURE SHOCK



Three Drivers for Transforming Education Systems



CHANGE AS AN EVENT

Rapid reform

Short term

Top down

Recipients of change

Roll out for mass adoption

Initial training at roll out

To judge and assess compliance

Assess, stop/continue

PURPOSE

SUCCESS HORIZON

LEADERSHIP

TEACHERS, PARENTS
& STUDENTS

IMPLEMENTATION

SUPPORT

ROLE OF
CENTRAL BODIES

ONGOING
DEVELOPMENT

CHANGE READY SYSTEM

Transformation

Long term

Collective responsibility

Agents of change

Empowering & supporting local adaptation

Ongoing learning and coaching

To facilitate learning and improvement across the system

Review, adapt, scale



A New Model of Transformative CHANGE

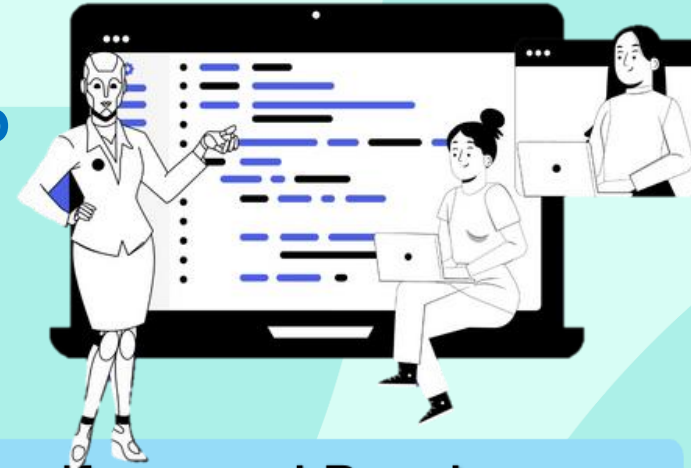
Building a change- ready, adaptive system



AI's Future in Educational Leadership

How Principals Can Leverage AI in Schools ?

Explore AI tools that can streamline your tasks and improve efficiency !



Featured Reads



Magic Padlet



Fireflies.ai

[The Benefits of Google Gemini for Teaching and Learning](#)



Chat GPT



School ai

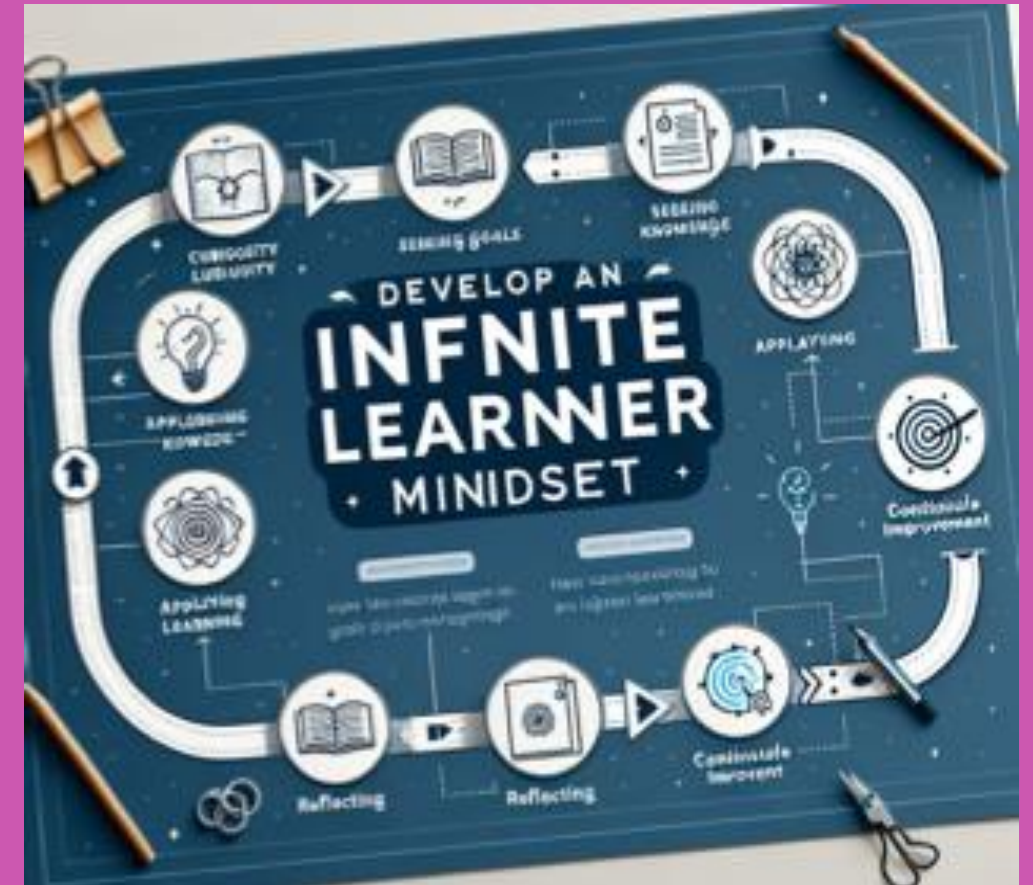


Microsoft Co-pilot

[AI in School Management: A New Era of Leadership](#)

Strategies for Becoming Infinite

- Continuous Professional Development
- Mentorship and Networking
- Reflective Practice
- Embracing Innovation
- Global Collaboration



Yes, and...



What can I do to become an

INFINITE LEARNER

in education?

A shield-shaped graphic with a dark blue background and a pink border. The text "Ready for the world" is written in a serif font, with "Ready" in yellow, "for" in white, "the" in white, and "world" in pink.

Ready for
the world



CAMBRIDGE



Any
questions?

Thank you!



Get in touch!

+818096469655

khanna.madhu1@gmail.com

cambridge.org/internationaleducation

© Cambridge University Press & Assessment 2024