



Cambridge International Examinations
Cambridge International General Certificate of Secondary Education

CANDIDATE
NAME

--

CENTRE
NUMBER

--	--	--	--	--

CANDIDATE
NUMBER

--	--	--	--



PAKISTAN STUDIES

0448/02

Paper 2 The Environment of Pakistan

May/June 2015

1 hour 30 minutes

Candidates answer on the Question Paper.

READ THESE INSTRUCTIONS FIRST

Write your name, Centre number and candidate number in the spaces provided.

Write in dark blue or black pen.

Do not use staples, paper clips, glue or correction fluid.

DO NOT WRITE IN ANY BARCODES.

Answer any **three** questions.

The Insert contains Photographs A and B for Question 4.

The Insert is **not** required by the Examiner.

The number of marks is given in brackets [] at the end of each question or part question.

This document consists of **20** printed pages and **1** insert.

- 1 (a) (i) On the outline map of Pakistan Fig. 1 mark and shade **two** areas which experience low annual rainfall (125 mm or less). [2]

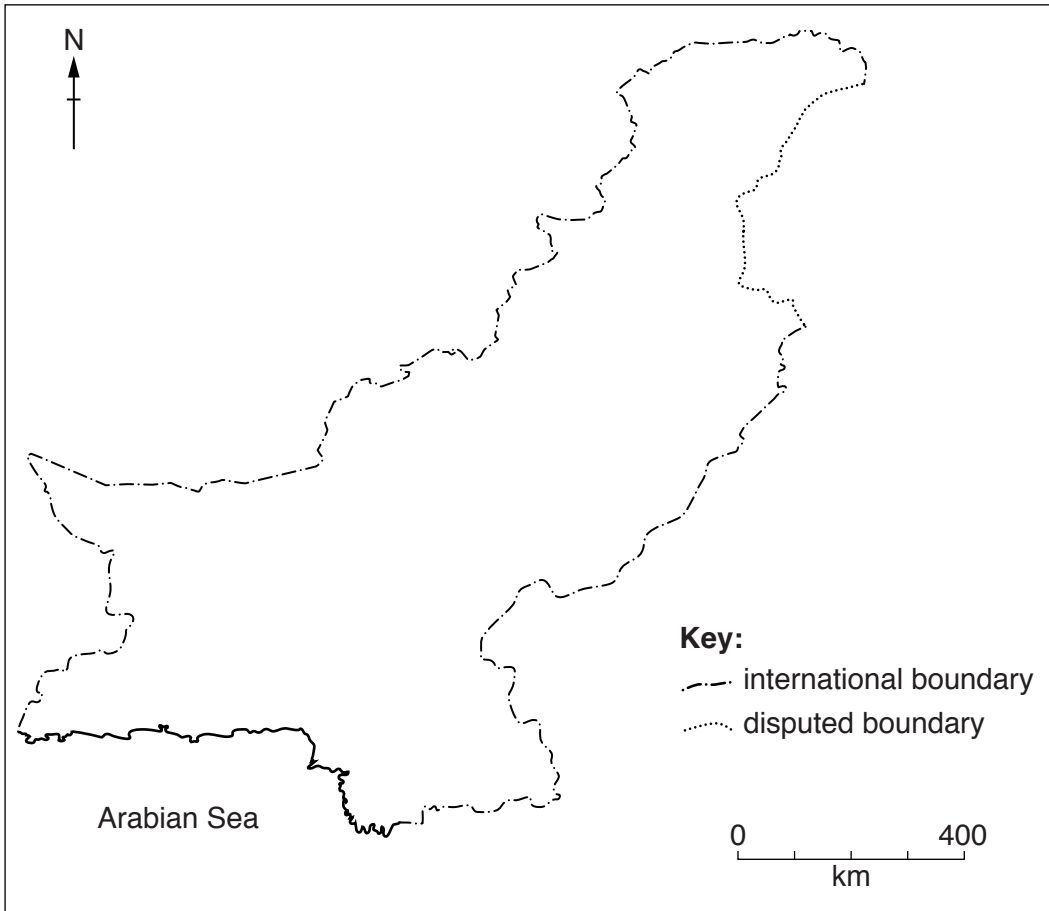


Fig. 1

- (ii) Name the crop which is mainly grown in these areas of low annual rainfall.
.....[1]

- (iii) Explain the difficulties for people living in areas of low rainfall.
.....
.....
.....
.....
.....
.....
.....[3]

(b) (i) Study Fig. 2 which shows rainfall data for two cities on the River Indus.

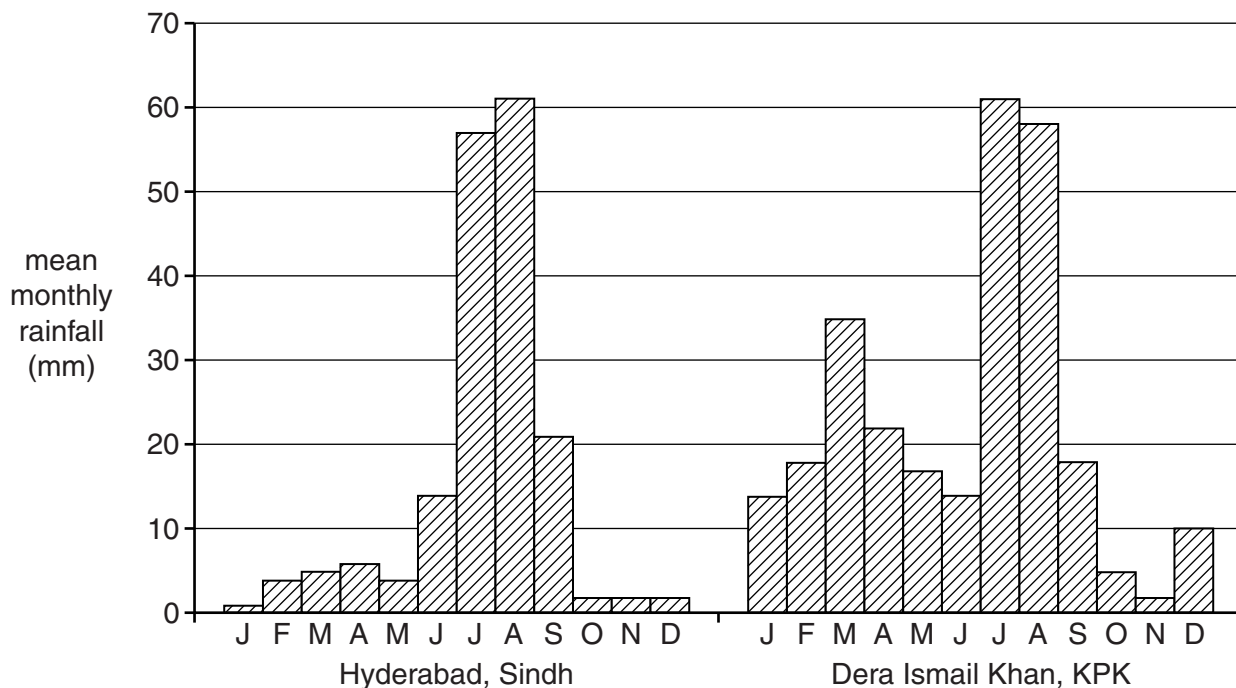


Fig. 2

A. Compare the amount and pattern of monthly rainfall in Hyderabad with that of Dera Ismail Khan.

.....

 [3]

B. Give **three** reasons for any similarities or differences in the two patterns of rainfall.

1

 2

 3
 [3]

(ii) Explain the effect of flooding on the local economy and transport links in communities along the River Indus.

.....
.....
.....
.....
.....
.....
.....
.....
.....[4]

(c) Give an example of a dry port and explain why it is located where it is.

Example

Explanation

.....
.....
.....
.....
.....
.....[3]

2 (a) Study Figs 3 and 4 which give information about the extraction of three metallic minerals in Pakistan in 2010–11.

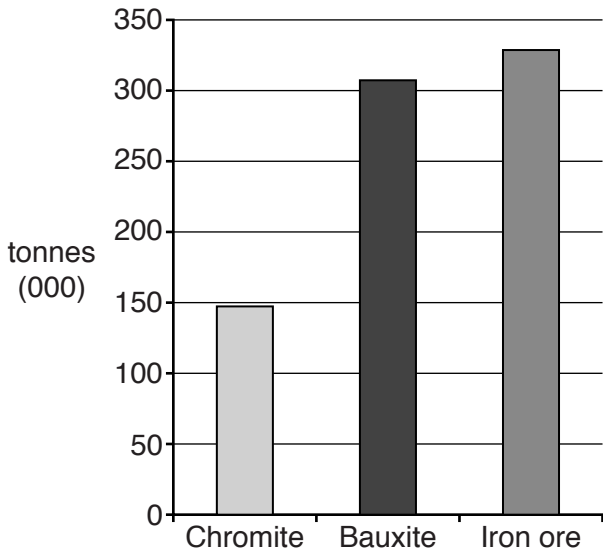


Fig. 3

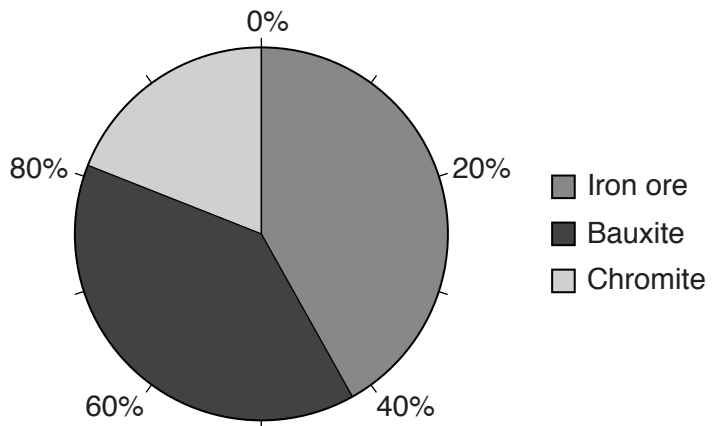


Fig. 4

(i) How much iron ore was extracted in 2010–11?

.....[1]

(ii) State the difference between the type of information being provided in Fig. 3 compared to that in Fig. 4.

.....
[1]

(b) (i) Give **one** use for the mineral chromite and name **one** area where it is extracted in Pakistan.

Use

Area[2]

(ii) What are the benefits of extracting mineral resources for local people and the national economy?

.....
.....
.....
.....
.....
.....
.....
.....
.....
.....[4]

(iii) Explain the effects of mineral extraction on the natural environment.

.....
.....
.....
.....
.....
.....
.....
.....
.....
.....[4]

(c) (i) Fig. 5 is a diagram of a thermal power station.

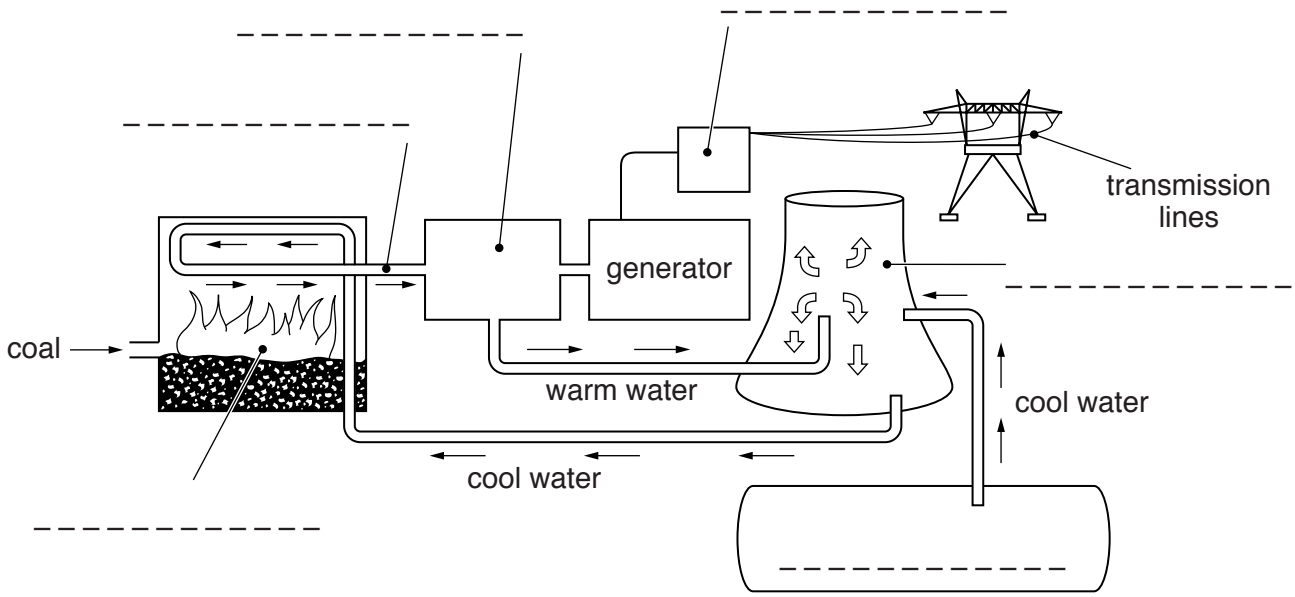


Fig. 5

Choose **three** terms from the list below and use them to label the diagram in **three** of the spaces provided.

- reservoir transformer boiler turbine cooling tower steam [3]

(ii) Explain why burning fossil fuels in power stations is unsustainable.

.....

.....

.....

.....

.....

.....

.....

.....

.....

.....

.....[4]

3 (a) Study Fig. 6 which gives information about the area of Pakistan under cultivation.

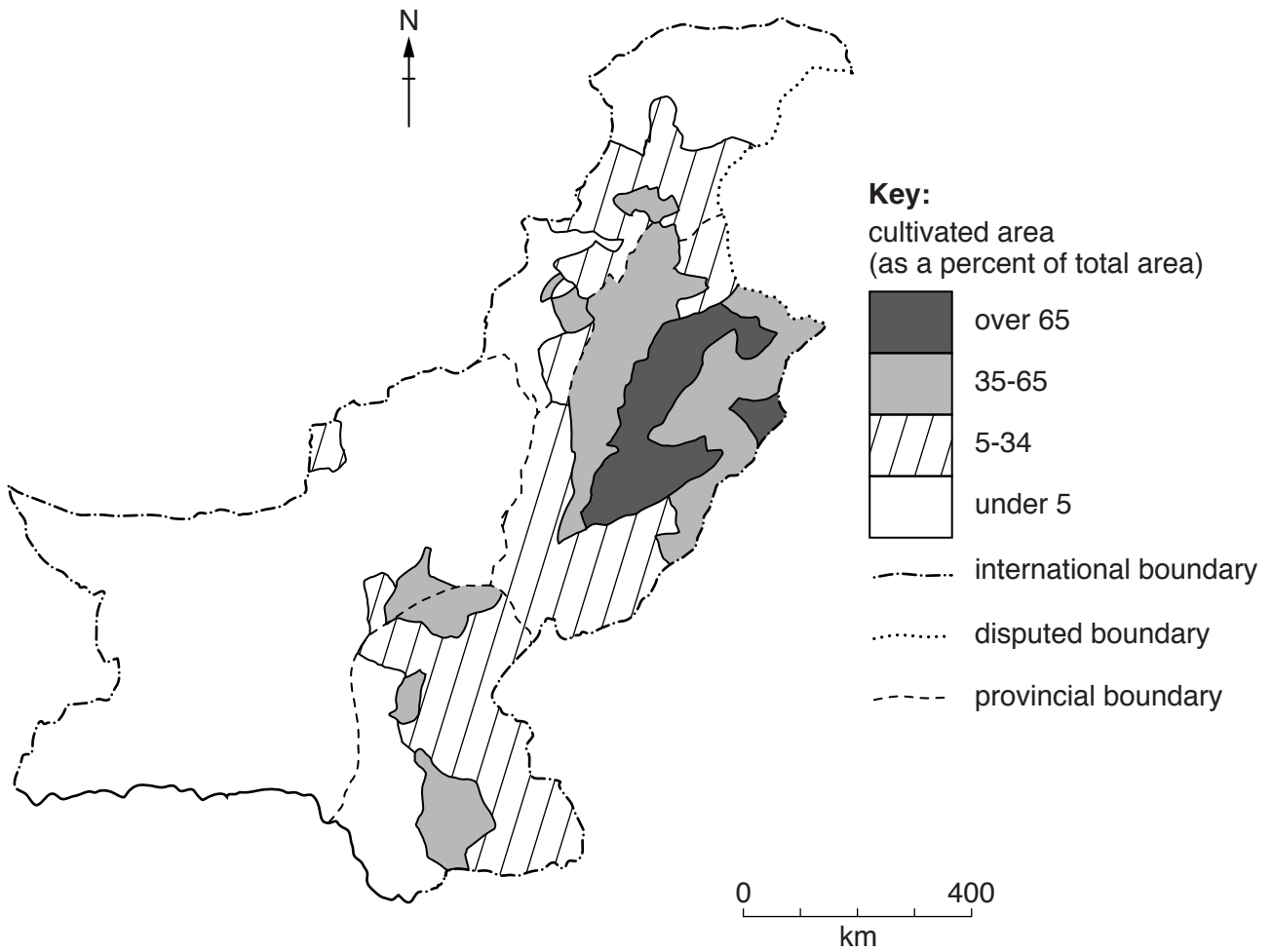


Fig. 6

(i) A. Name a district that has a cultivated area of over 65%.

.....

B. How much of Faisalabad District is cultivated?

.....[2]

(ii) Suggest reasons why so many districts of Pakistan have a cultivated area of less than 5%.

.....

.....

.....

.....

.....

.....[3]

(iii) Explain why agricultural land is no longer producing crops in many regions of Pakistan.

.....
.....
.....
.....
.....
.....
.....
.....
.....
.....[4]

(b) Study Fig. 7 which gives information about urban and rural population in Pakistan in two different years.

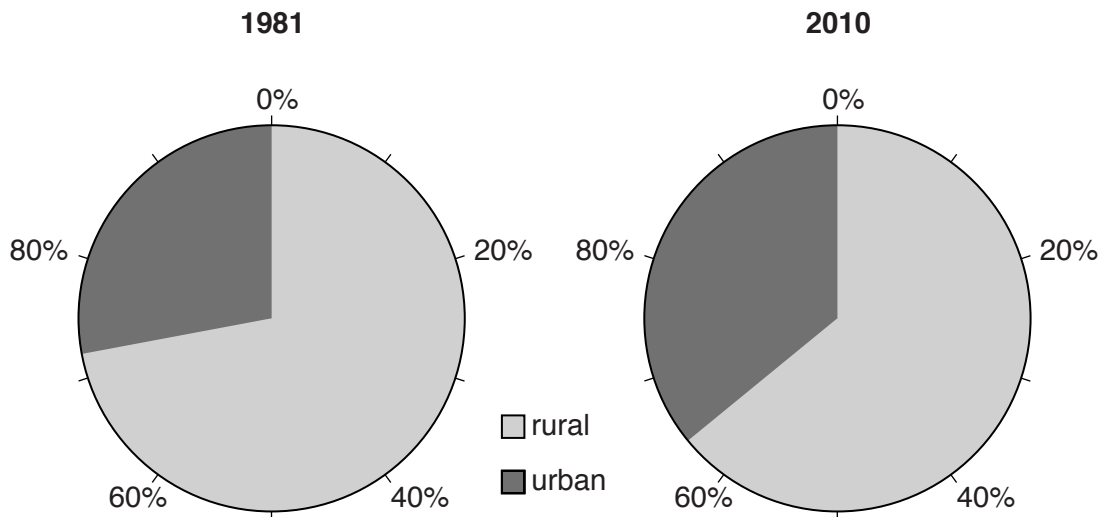


Fig. 7

(i) By how much has the rural population decreased between 1981 and 2010?

.....[1]

(ii) Loss of agricultural land is one reason for the rural population decreasing. Describe **three** other **push** factors that are causing people to move to urban areas.

1

2

3

.....[3]

(iii) Explain the effects on rural areas when large amounts of people migrate to urban areas.

.....

.....

.....

.....

.....

.....

.....

.....

.....

.....[4]

(c) Study Fig. 8 which is a graph showing the changes in population density for different provinces between 1972 and 2011.

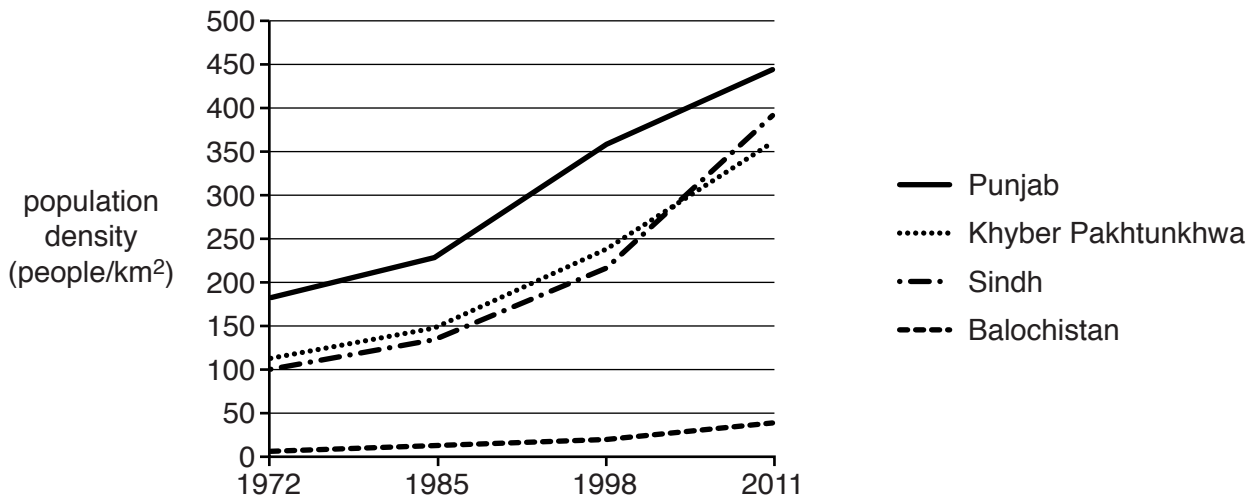


Fig. 8

Describe **two** of the main changes over time that can be seen in this graph.

1

.....

2

.....

.....[2]

- 4 (a) (i) Study Fig. 9 which shows formal and informal sector employment in Pakistan over three years.

Sector	2008–09	2009–10	2010–11
Formal	26.7	26.7	26.2
Informal	73.3	73.3	73.8

Fig. 9

Which sector of employment makes up the largest share of the labour force in Pakistan over these years?

.....[1]

- (ii) Tourism is a service industry. Name **two** other service industries.

1

2[2]

- (iii) Study Figs 10 and 11 which give information about visitors into Pakistan in 1999.

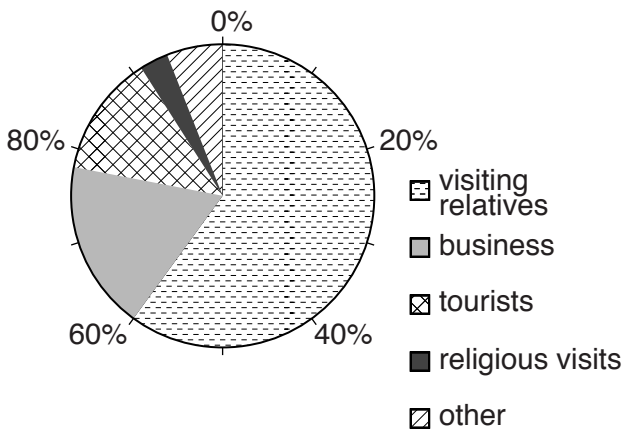


Fig. 10

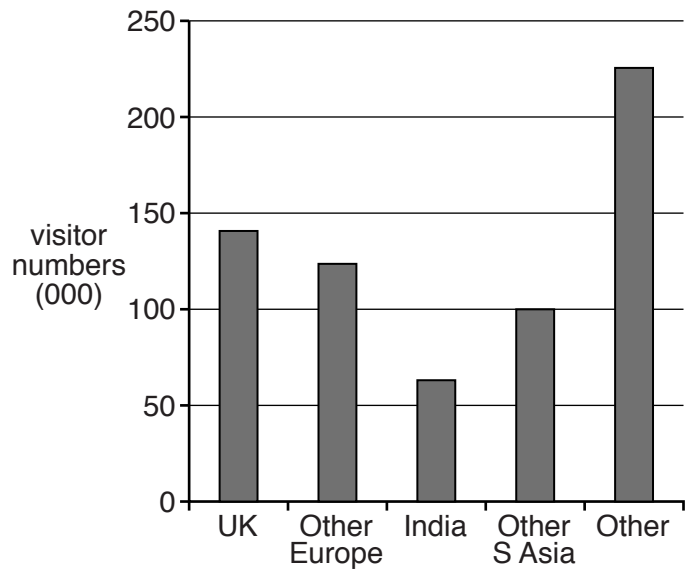


Fig. 11

- A. What percentage of visitors into Pakistan was classed as tourists?

.....

- B. What was the total number of visitors into Pakistan?

.....

- C. Suggest **one** reason why more people visited relatives compared to visiting Pakistan as tourists.

.....

.....[3]

(b) (i) Study Photographs A and B (Insert) which show airports in Gilgit and Chitral.

Using the photographs and your own knowledge describe the problems in providing air transport in the northern areas of Pakistan.

.....
.....
.....
.....
.....
.....
.....[3]

(ii) Explain the advantages to Pakistan as a developing country of providing more air transport routes.

.....
.....
.....
.....
.....
.....
.....
.....
.....
.....[4]

(c) (i) Name or describe a border crossing by road between Pakistan and a neighbouring country. Which country is linked to Pakistan by this road?

Border crossing

Country[2]

(ii) How useful is the border crossing you have named or described in (i) for trade? Give reasons for your answer.

.....
.....
.....
.....
.....
.....
.....
.....
.....[4]

(d) There are advantages and disadvantages to Pakistan of trading with different countries or groups of countries.

Read the following two views:

Pakistan would benefit from stronger trade links with China.

There are more advantages to Pakistan in maintaining trade with EU (European Union) countries.

Which view do you agree with more? Give reasons and refer to places or examples you have studied to support your answer.

.....
.....
.....
.....
.....
.....
.....
.....
.....
.....
.....
.....
.....
.....
.....
.....
.....
.....
.....
.....[6]

[Total: 25]

5 (a) Study Fig. 12 which gives information on birth rates and death rates in Pakistan.

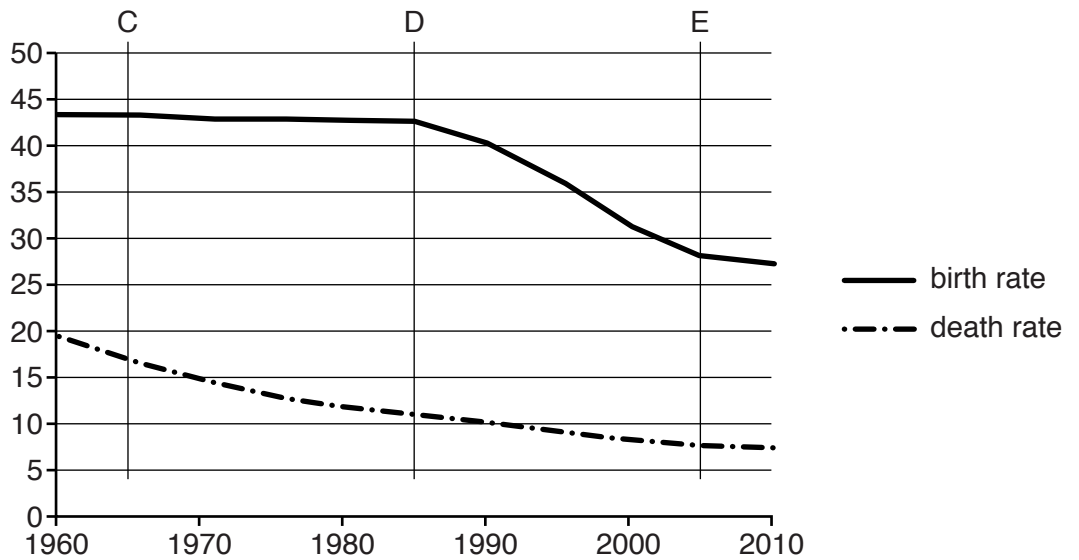


Fig. 12

(i) On Fig. 12:

- A. Add a suitable label for the y-axis (vertical axis).
- B. Circle one of the letters C, D, or E on the graph to show the point where natural increase is highest. [2]

(ii) Give **two** reasons why Pakistan continues to have a high birth rate.

1

.....

2

..... [2]

(iii) The death rate in Pakistan has been decreasing every year since 1960. Suggest reasons for this.

.....

.....

.....

.....

.....

..... [3]

(b) Study Fig. 13 which shows changes in population growth rates for two countries between 2000 and 2012.

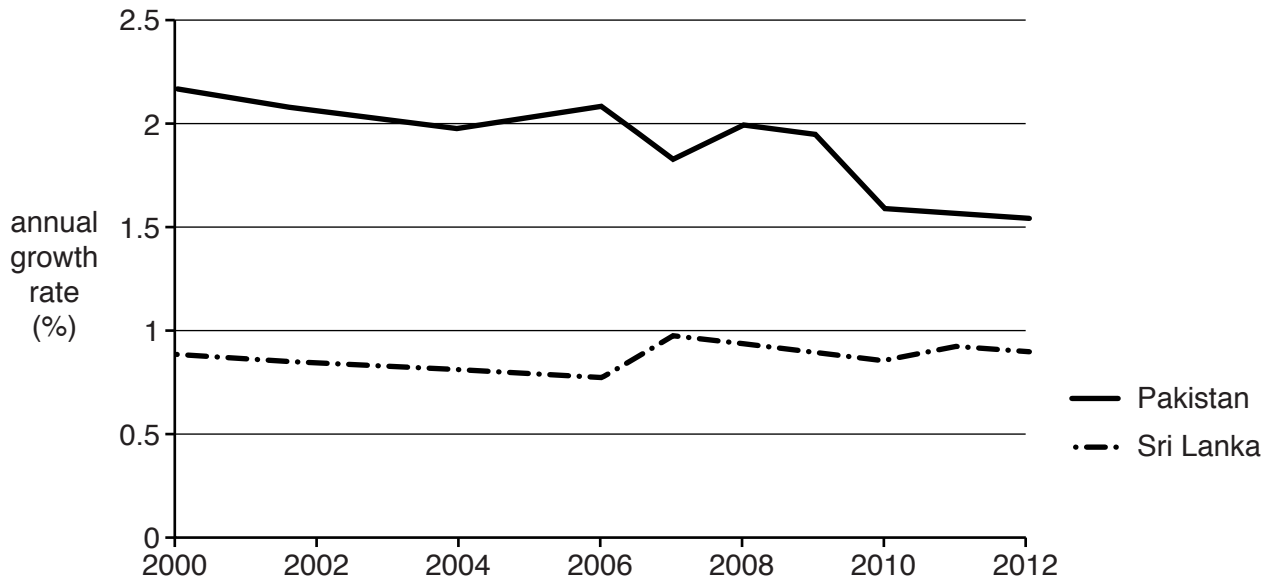


Fig. 13

(i) Compare the main changes in the population growth rate of Pakistan with that of Sri Lanka between these two dates.

.....

.....

.....

.....

.....

.....

.....[3]

(ii) One of the factors affecting population growth is international migration. In recent years Pakistan has experienced more emigration than immigration.

A. What is meant by the term 'immigration'?

.....

B. Explain what has caused high levels of emigration and the effects of this on the economy of Pakistan.

.....

.....

.....

.....

.....

.....

.....

.....[5]

(c) (i) What is meant by the term 'sustainable population growth'?

.....

.....[1]

(ii) Suggest **three** problems that might be caused by unsustainable population growth.

1

.....

2

.....

3

.....[3]

