

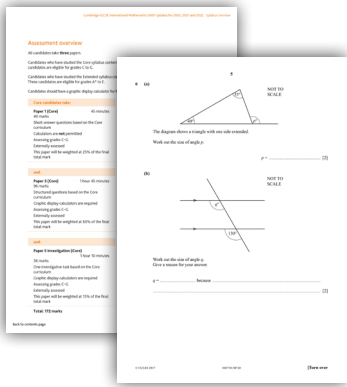


Support for Cambridge IGCSE™ International Mathematics 0607

Supporting you every step of the way

We provide a wide range of support so that you can give your learners the best possible preparation for Cambridge qualifications. Here is a list of the teaching and learning support available for Cambridge IGCSE International Mathematics 0607 for examination from 2020.

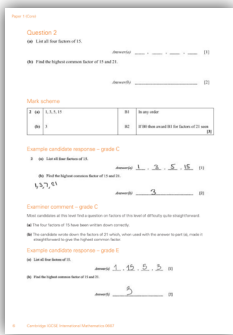
Our support material is available online through the School Support Hub at: www.cambridgeinternational.org/support



Syllabus and assessment materials

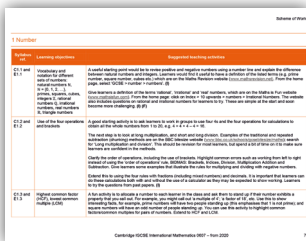
The syllabus is well designed, interesting to teach, accessible to learners and has been updated for first teaching in 2018. It explains what your learners need to know, how they will be assessed, and the relationship between assessment objectives and the examination papers.

Specimen papers and mark schemes will help you familiarise your learners with exam requirements, command words in questions and how to answer questions that meet the assessment objectives.



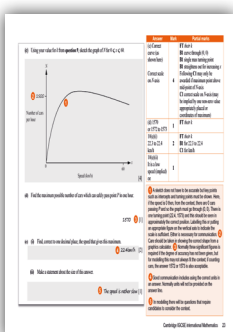
Example Candidate Responses (ECR)

ECR booklets provide illustrative examples of candidate work at different levels of performance. Each answer is annotated with examiner comments on the awarded mark which highlights where marks have been lost or gained by the candidate. The examiner explains how the candidate could have improved their answer, and lists common mistakes made in this question across all candidates who sat the exam. Booklets will be available in 2021.



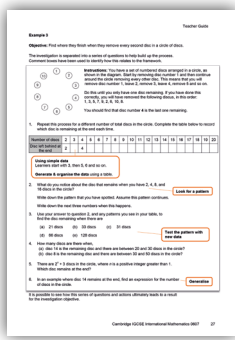
Scheme of Work

This medium term teaching plan provides ideas about how to construct and deliver Cambridge IGCSE International Mathematics 0607. The syllabus has been broken down into teaching units with suggested teaching activities and learning resources to use in the classroom. This document is a guide offering advice, tips and ideas to provide you with a basis to plan your lessons.



Specimen Paper Answers

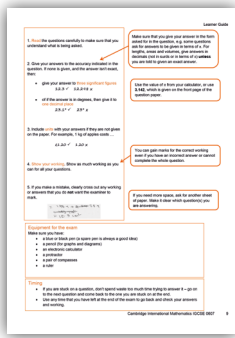
This booklet exemplifies high-standard examination responses for the new Paper 5 and Paper 6 examinations for the 2020 syllabus. Use this resource to develop your learners' understanding of what is required to gain marks based on answers written in the style of a Cambridge IGCSE candidate.



Teacher Guide

This guide has integrated language learning support. Many of our candidates are either multi-lingual or possess English as a second language and by integrating language learning into normal classroom teaching, teachers can expose learners to having to express themselves in English at the same time as they are acquiring knowledge and skills within the subject.

In addition, the guide offers guidance on organising and planning your teaching and on how to prepare your learners for the final assessment. It also suggests some teaching strategies that incorporate language learning in the classroom. There is a section on how to support learners to develop the thinking style and working approach required for investigations (Paper 5) and modelling (Paper 6).



Learner Guide

Learners can use this guide to develop an understanding of the Cambridge course and how it will be assessed, helping to increase their confidence. The guide describes each exam paper and includes useful advice to help your learners understand what to expect in the Cambridge exams, and how to plan their study and revision programme. There is also an Example Candidate Response for one question to help demonstrate the Cambridge standard.

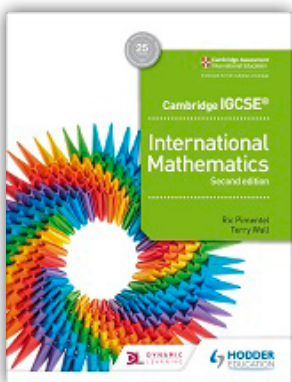
Other support

School Support Hub hosts an active Mathematics forum, which is a great way for you to keep up to date with your subject. Ask questions, get the latest information and connect with other Cambridge teachers around the world. You can also upload your own resources for the community to use, and access resources shared by others.

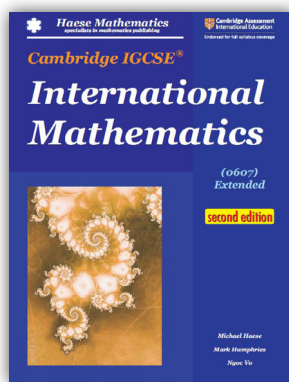
Our public website provides a list of endorsed textbooks for Cambridge IGCSE International Mathematics 0607. Many of our syllabuses are supported by a range of different endorsed textbooks and teachers are advised to choose the one that best suits their needs. There is information on the back of textbooks about which syllabus the book supports and the year of first examination of that syllabus.

Endorsed resources go through a rigorous quality-assurance process to make sure they closely reflect the syllabus and are appropriate for Cambridge schools worldwide. Resources may be endorsed for full syllabus coverage or endorsed to cover specific sections, topics or approaches. Look for the specific 'endorsed for' logo on the resource.

Hodder Education



Haese Mathematics



For further information on endorsed resources and their approaches to teaching and learning, go to the 'Published resources' tab on the relevant syllabus page of the Cambridge International public website.