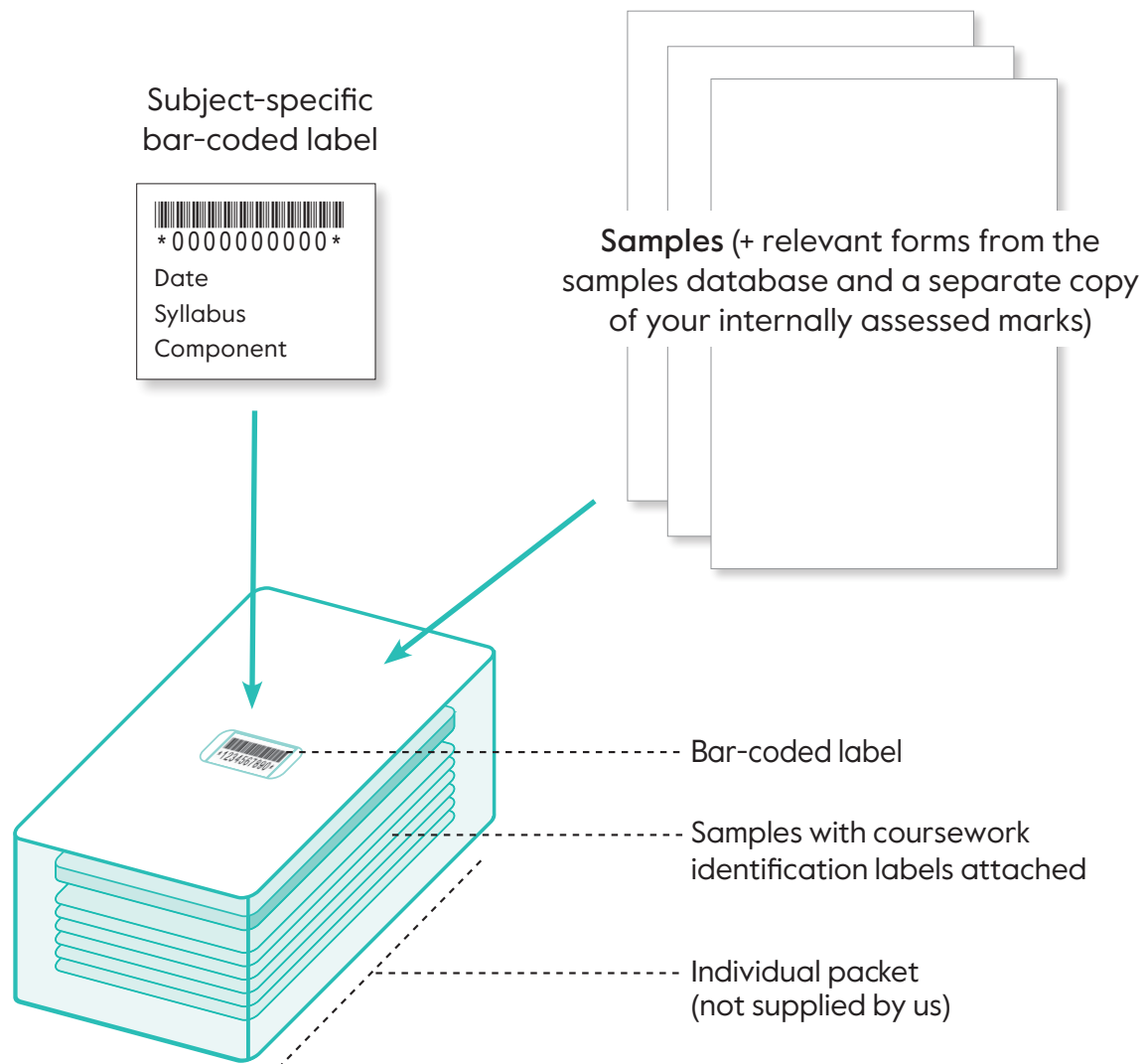


Packing internally assessed samples and externally assessed coursework

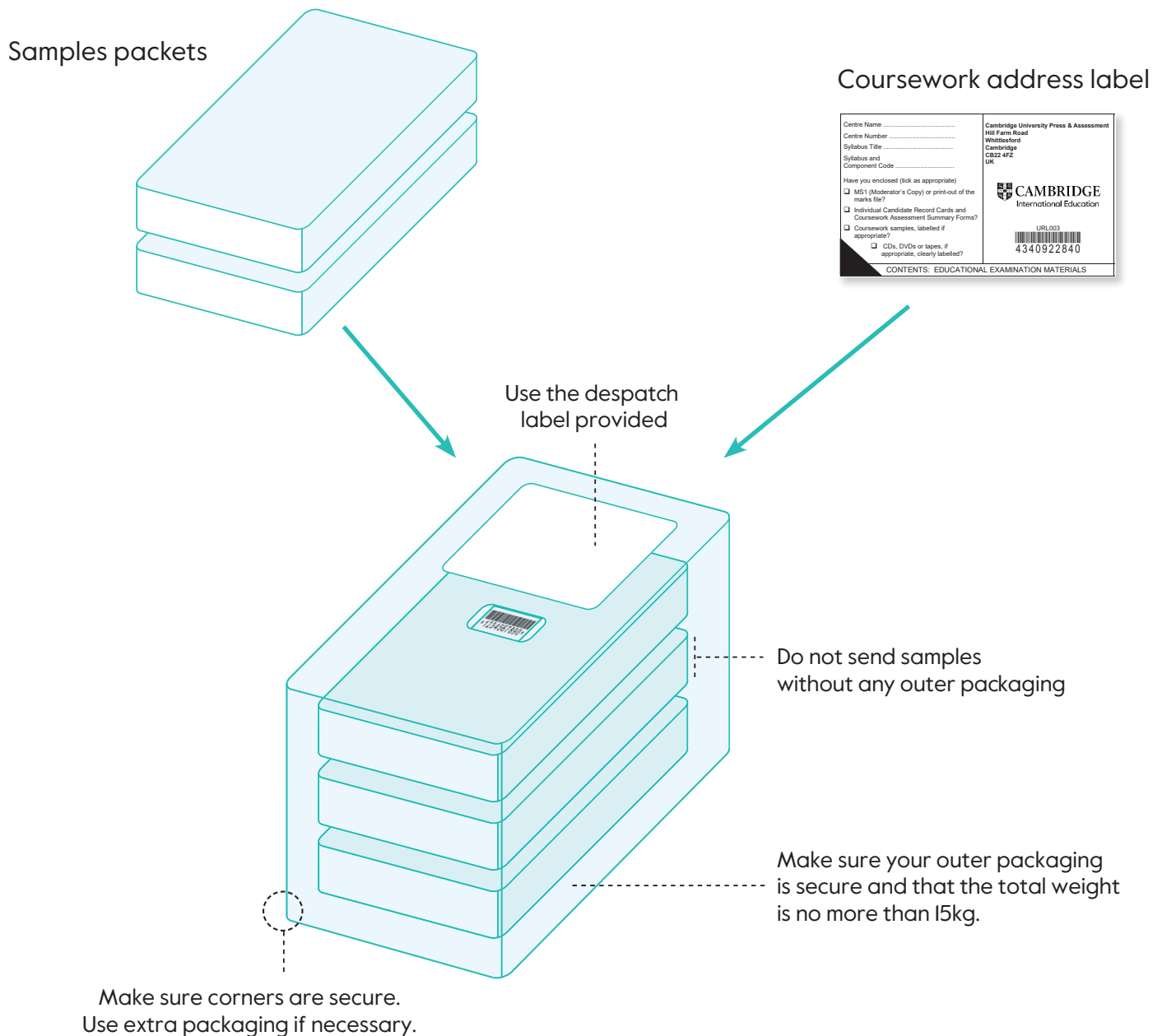


Important information

- Check the samples database to find out how you submit your internally assessed or externally assessed components to us. www.cambridgeinternational.org/samples
- Most components will not be submitted to us by Submit for Assessment www.cambridgeinternational.org/submit-for-assessment
- Include anything else as mentioned in the samples database
- Include a copy of your internally assessed marks if applicable
- Do not send your samples or candidate work without outer packaging.
- Despatch your packages following our guidance.

More details at:
www.cambridgeinternational.org/courseworkandmoderation
or see section 3.6 of the Cambridge Handbook

Despatching internally assessed samples and externally assessed coursework



Important information

- Do not send multiple components for the same syllabus in one package
- Once you have packed your samples contact a reputable courier who provides a tracking number.

More details at:
www.cambridgeinternational.org/courseworkandmoderation
or see section 3.6 of the Cambridge Handbook